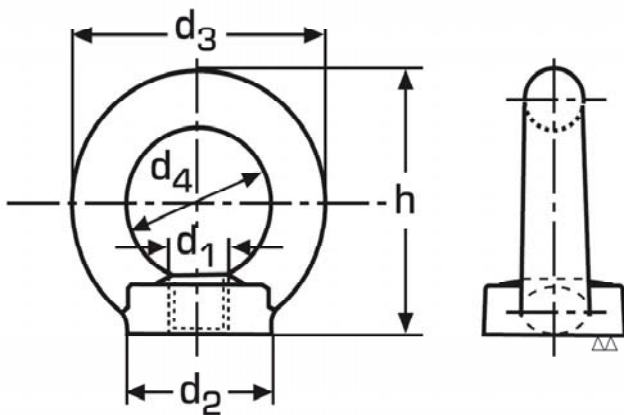


Ringmutter



| d1 | d2 | d3 | d4 | h |
|------|-----|-----|-----|-----|
| M 6 | 16 | 27 | 16 | 31 |
| M 8 | 20 | 36 | 20 | 36 |
| M 10 | 25 | 45 | 25 | 45 |
| M 12 | 30 | 54 | 30 | 53 |
| M 16 | 35 | 63 | 35 | 62 |
| M 20 | 40 | 72 | 40 | 71 |
| M 24 | 50 | 90 | 50 | 90 |
| M 30 | 65 | 108 | 60 | 109 |
| M 36 | 75 | 126 | 70 | 128 |
| M 42 | 85 | 144 | 80 | 147 |
| M 48 | 100 | 166 | 90 | 168 |
| M 56 | 110 | 184 | 100 | 187 |

Zwischenabmessungen und Sondergewinde auf Anfrage.